

# 2022-2024 NOTICE OF RACE and SAILING INSTRUCTIONS

Severn Sailing Association (Organizing Authority)

311 First Street, Annapolis, Maryland 21403; 410.268.8744; Website: [www.severnsailing.org](http://www.severnsailing.org)

*The notation '[NP]' in a rule means that a boat may not protest another boat for breaking that rule. The notation '[DP]' in a rule means that the penalty for a breach of that rule may, at the discretion of the protest committee, be less than disqualification. This changes RRS 60.1(a).*

## 1 RULES

- 1.1 The event is governed by the rules as defined in The Racing Rules of Sailing [RRS].
- 1.2 This Notice of Race and the Sailing Instructions [NoR/SIs] applies to events hosted by Severn Sailing Association [SSA] that do not publish a separate NoR and SI. A schedule of these events can be found at [www.severnsailing.org](http://www.severnsailing.org).

## 2 COMMUNICATION

- 2.1 The race office is located on the upper floor of the SSA Clubhouse. It can also be reached by email at [SSA.race.office@gmail.com](mailto:SSA.race.office@gmail.com) or phone at 410.268.8744.
- 2.2 The official notice board is located under the SSA deck in the Snack Bar area.
- 2.3 Prior to the event, amendments to the NoR/SIs will be posted electronically at [www.severnsailing.org](http://www.severnsailing.org). During the event, amendments to the NoR/SIs will be posted on the official notice board and may be posted electronically. In the event of a conflict, the official notice board takes precedent.
- 2.4 A competitors' meeting may be held on the first day of a regatta.
- 2.5 [NP] All boats may carry a VHF radio capable of communicating on channels 65A and 16.
- 2.6 On the water, the race committee may make courtesy broadcasts to competitors on VHF channel 65A.

## 3 CHANGES TO SAILING INSTRUCTIONS

- 3.1 Changes to the NoR/SIs will be posted no later than 0930 on the day they take effect with the following exceptions.
- 3.2 Changes that affect the schedule will be posted no later than the protest time limit the day before it takes effect.
- 3.3 On the first day of a regatta, changes may be posted after 0930 if within 15 minutes after the competitors' meeting.
- 3.4 If racing is postponed ashore, changes may be posted no later than 90 minutes prior to the revised schedule for the first warning signal.

## 4 ELIGIBILITY AND ENTRY

- 4.1 The event is open to all boats of SSA Sanctioned and Open Fleets or Invited Classes.
- 4.2 Eligible boats may enter by completing the online entry form (available at [www.severnsailing.org](http://www.severnsailing.org)) and paying the required fee, no later than 2 hours before the boat's first scheduled warning signal.

## 5 FEES

- 5.1 Entry fees for *Non SSA members* are as follows:

Number of persons on crew for boat class	Club Regattas		Invitational Regattas	
	1 Day	2 Day	1 Day	2 Day
One	\$30	\$40	\$20	\$30
Two or three	\$35	\$50	\$25	\$40
Four or more*	\$40	\$60	\$30	\$50

\*J22 is defined as a "Four or more" person boat

## 6 SIGNALS MADE ASHORE

- 6.1 Signals made ashore will be displayed from the flagpole in front of the SSA Clubhouse.
- 6.2 When flag AP is displayed ashore, "1 minute" is replaced with "not less than 60 minutes" in RRS Race Signals.

## 7 SCHEDULE

- 7.1 The scheduled time of the first warning signal is 1100 hours.
- 7.2 On the last scheduled day of racing no warning signal will be made after 1500 hours.
- 7.3 The number of races scheduled for a 2-day regatta is 5 and for a 1-day regatta is 3.

## 8 CLASS FLAGS

- 8.1 Each class flag will be the class insignia on a plain background.

## 9 RACING AREAS

- 9.1 NoR/SI Addendum A shows the racing areas used. Racing will take place in area "A" unless a notice is posted.

## 10 THE COURSES

- 10.1 No later than the warning signal, the race committee will designate the course, and it may also display the approximate compass bearing of the first leg.
- 10.2 No later than the warning signal, the order of starts will be displayed.
- 10.3 No later than the warning signal, the race committee may display flag "C" with several sound signals to indicate that mark 1 will be a new mark as described in NoR/SI 11.4.
- 10.4 The course diagrams are contained in NoR/SI Addendum B. They show the courses, the order in which marks are to be passed, and the side on which each mark is to be left.

## 11 MARKS

- 11.1 Marks 1, 1a, 2, 3s, 3p and 3 will be orange cylinders/spheres.
- 11.2 Marks S and SF will be yellow cylinders/ spheres.
- 11.3 Marks F and RF will be orange cylinders/ spheres.
- 11.4 New marks, as provided in NoR/SI 14.1, will be orange tetrahedrons.

## 12 CHECK IN

- 12.1 [DP][NP] Each boat shall sail by the race committee signal boat and hail her sail number before a boat starts the first race in which she competes each day.
- 12.2 A boat failing to comply with the check in procedure shall receive, without a hearing, a 20% scoring penalty in the first race in which the boat competes, calculated in accordance with RRS 44.3(c). This changes RRS 63.1 and A5.

## 13 THE START

- 13.1 Races will be started by using RRS.
- 13.2 The starting line will be between a staff displaying an orange flag on the race committee signal vessel and the course side of the starting mark.
- 13.3 [DP] Boats whose warning signal has not been made shall avoid the starting area during the starting sequence for other races.
- 13.4 A boat that does not start within 10 minutes after her starting signal will be scored did not start (DNS) without a hearing. This changes RRS A4 and A5.
- 13.5 The race committee intends to hail boats on the course side (OCS). A boat may not base a request for redress on failure of the race committee to hail any sail or hull numbers; failure of a boat to hear a hail; a boat's position in the sequence of hails; promptness of the hail. The changes RRS 62.1.

## 14 CHANGE OF THE NEXT LEG OF THE COURSE

- 14.1 To change the next leg of the course, the race committee will lay a new mark (or move the finishing line) and remove the original mark as soon as practicable. When in a subsequent change a new mark is replaced, it will be replaced by an original mark.

## 15 THE FINISH

- 15.1 The finishing line will be between a staff displaying a blue flag on the race committee vessel and the course side of the finishing mark.

## 16 TIME LIMITS

- 16.1 Time limit is 2 hours for the first boat to finish in each class.
- 16.2 Boats which have not finished and are still racing 30 minutes after the first boat in their class finishes will be recorded as "Time Limit Expired" (TLE) and will receive a score 2 points more than the number of finishers. This changes RRS 35, A5.1, A5.2 and A10.

## 17 PENALTY SYSTEM

- 17.1 RRS/US Appendix V2, Post-Race Penalties, applies.

## 18 HEARING REQUESTS

- 18.1 The protest time limit is 60 minutes after the race committee signal vessel docks. The time will be posted on the official notice board.
- 18.2 Hearing request forms are available at the race office. Protests and requests for redress or reopening shall be delivered to the race office by email or in person (see NoR/SI 2.1) within the appropriate time limit.
- 18.3 Notices will be posted no later than 30 minutes after the protest time limit to inform competitors of hearings in which they are parties or named as witnesses and where and when the hearings will be held.

## 19 SCORING

- 19.1 A boat's series score shall be the total of her race scores.
- 19.2 Scoring Inquiries shall be made to the Race Committee on the Scoring Inquiry form.

## 20 SAFETY REGULATIONS

- 20.1 [DP] A boat that retires from a race or leaves the racing area prior to the end of racing shall notify the race committee as soon as practicable. If it is not practicable to notify the race committee on the water, notification shall be on shore as soon as possible. The race committee can be notified by contacting any race committee boat verbally or by radio (see NoR/SI 2.6).
- 20.2 [DP] All boats shall have available an appropriate line, not less than 25 feet long, which can be used for towing.
- 20.3 [DP] Appropriate protective clothing shall be worn by competitors from 15 November through 15 March and at all other times that the water temperature is below 60f. Wetsuits or dry suits may be appropriate for this purpose, but skippers are solely responsible for the safety of their crew, their boat and themselves.
- 20.4 The race committee may carry out checks of safety equipment required in NoR/SI 20 or class rules.
- 20.5 A boat shall not exercise right of way, cross in proximity to, or interfere with reasonable transit of the race area by commercial ships, tugs, or barges. Boats must take evasive action well in advance of a potentially dangerous situation. The US Coast Guard, ship captains, and bay pilots have been encouraged to report any incident they observe. The race committee or protest committee may protest a boat for this NoR/SI based on information received from any source. The protest time limit does not apply. This changes RRS 60.2, 60.3, and 61.3.

## 21 RISK

- 21.1 RRS 3 states: 'The responsibility for a boat's decision to participate in a race or to continue to race is hers alone.' By participating in this event each competitor agrees and acknowledges that sailing is a potentially dangerous activity with inherent risks. These risks include strong winds and rough seas, sudden changes in weather, failure of equipment, boat handling errors, poor seamanship by other boats, loss of balance on an unstable platform and fatigue resulting in increased risk of injury. **Inherent in the sport of sailing is the risk of permanent, catastrophic injury or death by drowning, trauma, hypothermia or other causes.**

## 22 PRIZES

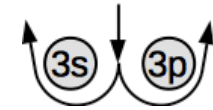
- 22.1 Prizes will be awarded to the skippers and crews placing first, second and third in the regatta.
- 22.2 Additional prizes may be awarded at the discretion of the organizing authority.

## NoR/SI Addendum B - COURSES

The following diagrams indicate the order, rounding side, approximate angles of the courses that may be sailed. In the below table, the course designation is followed a colon and then the mark rounding order for that course. At a gate, if only one mark is set, that mark shall be rounded to port.

Flag G (Gate):

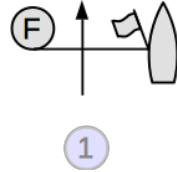
When the race committee displays **Flag G** prior to the warning, then the leeward mark will be a gate. Boats rounding the leeward mark to go upwind shall round either leeward mark.



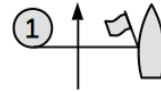
		Basic Finish	R Finish	S Finish	F Finish	
<b>Downwind Finishes</b>						
	<b>L</b>		<b>LR2:</b> Start/SF-1-3-1-Finish/SF <b>LR3:</b> Start/SF-1-3-1-3-1-Finish/SF	<b>LR2:</b> Start/S-1-3-1-S-Finish/RF <b>LR3:</b> Start/S-1-3-1-3-1-S-Finish/RF	<b>LS3:</b> Start/3-1-3-1-Finish/3 <b>LS3:</b> Start/3-1-3-1-3-1-Finish/3	<b>LF2:</b> Start/S-1-3-1-Finish/F <b>LF3:</b> Start/S-1-3-1-3-1-Finish/F
	<b>LA</b>		<b>LA2:</b> Start/SF-1-1a-3-1-1a-Finish/SF <b>LA3:</b> Start/SF-1-1a-3-1-1a-3-1-1a-3-1-1a-Finish/SF	<b>LAR2:</b> Start/S-1-1a-3-1-1a-S-Finish/RF <b>LAR3:</b> Start/S-1-1a-3-1-1a-3-1-1a-S-Finish/RF	<b>LAS2:</b> Start/3-1-1a-3-1-1a-Finish/3 <b>LAS3:</b> Start/3-1-1a-3-1-1a-3-1-1a-Finish/3	<b>LAF2:</b> Start/S-1-1a-3-1-1a-Finish/F <b>LAF3:</b> Start/S-1-1a-3-1-1a-3-1-1a-Finish/F
<b>TL</b>		<b>TL2:</b> Start/SF-1-2-3-1-Finish/SF <b>TL3:</b> Start/SF-1-2-3-1-3-1-Finish/SF	<b>TLR2:</b> Start/S-1-2-3-1-S-Finish/RF <b>TLR3:</b> Start/S-1-2-3-1-3-1-S-Finish/RF	<b>TLS2:</b> Start/3-1-2-3-1-Finish/3 <b>TLS3:</b> Start/3-1-2-3-1-3-1-Finish/3	<b>TLF2:</b> Start/S-1-2-3-1-Finish/F <b>TLF3:</b> Start/S-1-2-3-1-3-1-Finish/F	

Upwind Finishes

Basic Finish

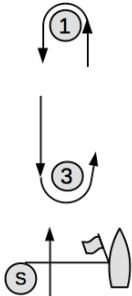


S Finish



**W**

Finish Area



**W2:** Start/S-1-3-  
Finish/F

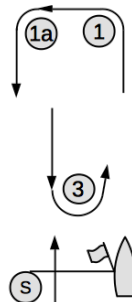
**W3:** Start/S-1-3-  
1-3-  
Finish/F

**WS2:** Start/S-1-3-  
Finish/1

**WS3:** Start/S-1-3-  
1-3-  
Finish/1

**WA**

Finish Area



**WA2:** Start/S-1-1a-  
3-Finish/F

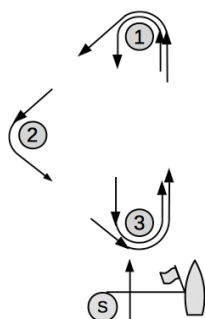
**WA3:** Start/S-1-1a-  
3-1-1a-3-  
Finish/F

**WAS2:** Start/S-1-1a-3-  
Finish/1

**WAS3:** Start/S-1-1a-3-  
1-1a-3-  
Finish/1

**TW**

Finish Area



**TW2:** Start/S-1-2-3-  
Finish/F

**TW3:** Start/S-1-2-3-  
1-3-  
Finish/F

**TWS2:** Start/S-1-2-3-  
Finish/1

**TWS3:** Start/S-1-2-3-  
1-3-  
Finish/1

NoR/SI Addendum A - RACING AREAS

